

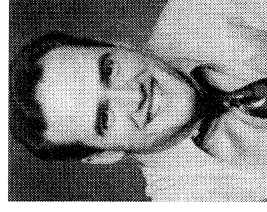
The Shakespeare Project Presents Henry the Fourth, Part 1

The Players (in order of appearance)

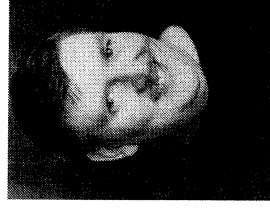
King Henry the Fourth~~~~~Bob Thorson
 Earl of Westmoreland~~~~~Norm Boucher
 Prince John of Lancaster~~~~~Scott Olson
 Henry, Prince of Wales~~~~~Rob Kahn
 Sir John Falstaff~~~~~Joseph Bowen
 Edward Poins, gentleman-in-waiting to Prince Henry~~~~~Norm Boucher
 Thomas Percy, Earl of Worcester~~~~~Andrew Powdermaker
 Henry Percy, Earl of Northumberland~~~~~Norm Boucher
 Henry Percy, surnamed Hotspur, his son~~~~~David Skidmore
 Sir Walter Blunt~~~~~Dennis Sook
 A Traveller~~~~~Raymond Wohl
 A Traveller~~~~~Tracy Payne
 Ostler~~~~~Scott Olson
 Gadshill~~~~~Marshall Crawford
 Chamberlain~~~~~Susan Nuell
 Peto~~~~~Scott Olson
 Bardolphe~~~~~Richard Marlatt
 A Traveller~~~~~Dennis Sook
 Lady Percy, wife to Hotspur, and sister to Mortimer~~~~~Susan Nuell
 A Servant, in the house of Percy~~~~~Marshall Crawford
 Francis the Drawer~~~~~Bob Thorson
 Vintner~~~~~Dennis Sook
 Mistress Quickly, hostess of the Boar's Head Tavern~~~~~Tracy Payne
 Sheriff~~~~~Andrew Powdermaker
 Edmund Mortimer, Earl of March~~~~~Marshall Crawford
 Owen Glendower~~~~~Raymond Wohl
 Lady Mortimer, daughter to Glendower, wife to Mortimer~~~~~Tracy Payne
 Archibald, Earl of Douglas~~~~~Marshall Crawford
 Sir Richard Vernon~~~~~Raymond Wohl
 Richard Scroop, Archbishop of York~~~~~Susan Nuell
 Sir Michael, of the House of the Archbishop of York~~~~~Norm Boucher
 Messenger~~~~~Tracy Payne
 Messenger~~~~~Susan Nuell

The Scene: England and Wales

There will be one 10 minute intermission



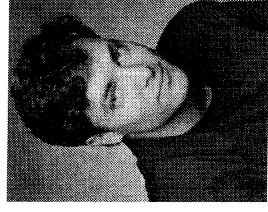
Norm Boucher (Westmoreland/ Poins / Sir Michael) is glad to continue his association with *The Shakespeare Project*, which began as a Special Project of Equity Library Theatre, of which he is now Co-President of the Board with Jack Hickey. ELT is currently producing *Hamlet*. His favorite ELT roles include Puck in *A Midsummer Night's Dream*, David in the critically acclaimed *Judevine*, and *Macbeth*. Norm was recently seen promoting Bud Light on Super Bowl Sunday. He would like to dedicate his performance to his best friends, George and Daisy.



Joseph Bowen (Sir John Falstaff) relocated to Chicago from Boston a short while back. He has appeared in *Shakespeare Project* readings of *Edward the Third*, *Edward the Second*, *Pericles*, *The Taming of the Shrew* and *The Merchant of Venice* among others. His Chicago credits include *Lonely Planet*, *Marisol*, and *The Comedy of Errors*. Regional credits include *The Boys Next Door*, *The Elephant Man* and *Twelfth Night*.



Marshall Crawford (Douglas, Lord Mortimer, Gadshill) is happy to be working with the folks at *The Shakespeare Project*. Marshall was last seen in *The Roads to Home* for Equity Library Theatre and the movie *The Deal* being released in the fall. As Artistic Director of Turnaround Productions, Marshall was responsible for putting together the great team for *Faith Healer* at The Turnaround Theatre and later at The Steppenwolf.



Robert Kahn (Prince Hal) was most recently seen as Picasso in Steve Martin's *Picasso at the Lapin Agile*. Other Chicago credits include Andrew in *I Hate Hamlet* at the Royal George Theatre, Ralph Darling in *Ten Tiny Fingers*, *Nine Tiny Toes* with Rivendale Theatre Ensemble, of which he is a company member, as well as productions with The Apple Tree Theatre, Organic Theatre, Prop Theatre, and Bailiwick Theatre. Rob is a graduate of Syracuse University, and is married to musician, Toy Kahn, of the Knolls.



Susan Nuell (Lady Percy, Archbishop of York, messenger) is a new comer to *The Shakespeare Project*, but ELT audiences will remember her as Betty in last summer's production of *Ivy Buirhewlitz* or the previous summer as Clair in the world premier of *Wingwalkers*. Favorite regional credits include a broad range of roles from Goneril in *King Lear*, Lady Macduff in *Macbeth*, and Helena in *A Midsummer Night's Dream* to Gussie in *Merrily We Roll Along*. When not on stage, you can catch Susan welcoming you aboard the pages of Holland America Cruise brochures or in trade shows across the country discussing the benefits of Mitutoya's Quick Vision Technology. Hey, It's a living!

The History Continues...

This is the fifth play of eleven to be presented in our 1997 Theatrical Reading series "The History of the English Kings." **We began** with Shakespeare's *King John*, the son of Henry II and brother of King Richard I (Coeur-de-lion). We saw John succeeded at the end of the play by his son, Henry III, who reigns for 57 years, followed by his son, King Edward I. **In our second reading**, we picked up the story with *Edward II*'s stormy reign, which concluded with a promising young prince ascending the throne--King Edward the Third. **Our third reading**, *The Reign of King Edward the Third* ended with the king's infamous young son, Edward the Black Prince, having proved himself a warrior and the *perfect* heir apparent to the English Throne. However, as we learned in **our fourth reading**,

Richard II, this never came to pass. In addition we witnessed the story of one king's painful journey to self awareness as we revisited themes of political manipulation, intrigue, familial struggle and true leadership abilities. *Richard II* left us having just witnessed the death of King Richard, following his "voluntary" abdication of the throne to his cousin Henry Bullingbrook, and the pledge of this new king, Henry the Fourth:

"I'll make a journey to the Holy Land,
To wash this blood off from my guilty hand."

DIRECTOR'S NOTES

I wish you a very warm welcome to our "Theatrical Reading" of *The First Part of Henry the Fourth*, one marvelous play in a centuries-old "mini-series". It is indeed among the greatest history plays, bending the historical facts, "just a wee bit", here and there. It is not, of course, a historical documentary, but rather, a passionate drama. The playwright has integrated comedy and history in remarkable ways as he raises the paramount and oh-so-contemporary question of what constitutes a good ruler.

There has been much talk of heroes in recent years and our never-ending search for them in our society continues. We are continually reminded in today's world that heroic souls may not always exist in our political or military leaders as we know them. The King Henry stories remind us too, that the search for heroes in our lives is by no means a new dilemma.

For the next couple of hours you'll be given a glimpse of society as a whole, with bawdy irreverence and some very bold reasoning. Relax, listen closely, and imagine. William Shakespeare will be by your side all the while, with his very special awareness of our human failings and the glory of human possibility.

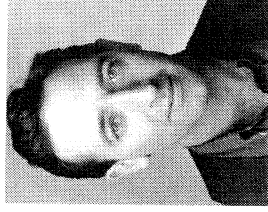
Richard Marlatt



Bob Thorson (King Henry) most recently appeared as Sagot in "Picasso at the Lapin Agile," directed by Randall Arney, at the Briar Street Theatre. Other Chicago credits include work at Chicago Dramatists Workshop, Victory Gardens and The Body Politic. Bob was a company member at the Cleveland Play House for five years, appearing in over 30 productions there. He also directed Chekov's "Swan Song" at the Play House. Around the country Bob has worked for Princeton Theatre Company in New Jersey, Mountain Playhouse in Pennsylvania, and at theatres in St. Louis, Minneapolis, Chatautaqua, and New York where he appeared in "The Student Prince" with the Metropolitan Opera company.

Raymond Wohl (Owen Glendower, *et al*) is happy to be participating in his first reading with *The Shakespeare Project*. He most recently appeared as the Ghost *Hamlet*, starring Richard Marlatt with ELT.

Other theater credits include work with San Diego National Shakespeare Festival, Old Globe Theatre, Theatre for the New City in NYC, in plays like *Taming of the Shrew*, (Salt Lake City), *Sheer Madness* (Chicago), *Ellen Universe...* (Chicago Dramatist Workshop), and national tours with his own theatre company. In 1988, Mr. Wohl co-founded HealthWorks Theatre, which produces AIDS and Health Education programs. When not on stage, Mr. Wohl teaches Fine Arts at Irving Park Middle School in Chicago.



Richard Marlatt (Director, Bardolph) Representative directing experience includes Edward Albee's *Seascape* with Fort Harrod Drama Productions, *The Runner Stumbles* by Milan Stitt, for Alpha Productions, and Jean-Paul Sartre's *No Exit* at The Little Theatre in the City. He produced and directed *Hello Out There* for Pape Players Ensemble and his own adaptation of Salinger's *For Esme, With Love and Squalor*. He has adapted numerous works of prose and poetry into interpretative and narrative theatre productions including *The Sound of Silence*, a poetic performance utilizing works written about the silence and solitude in human existence, and *Revolutions Per Moment*, his own one-man ceremonial performance piece. Richard is an actor as well, most recently appearing as "Hamlet" in Chicago for Equity Library Theatre. His theatre training includes work with the Royal National Theatre of Great Britain and the National Shakespeare Conservatory.

Mara Polster (Artistic Director) wishes "her baby," *The Shakespeare Project* a very happy 2nd birthday this week. With the help of an ever growing and enthusiastic audience and a wonderful acting company, *The Shakespeare Project* is gathering much steam in its journey towards our first full production -- the apocryphal *King Edward the Third*, scheduled for 1998-- and the completion of the Canon with our final reading, *Hamlet*, in December of 1998. Mara graduated from **The Webster Conservatory of Theatre Arts and Dance** in St. Louis. She has acted on many of the stages here in Chicago (although some still elude her) and many others across the country. Since May of 1995 *The Shakespeare Project* has enabled her to explore dream roles such as Katherina, Isabella, Paulina, to provide the same opportunity to other actors, and to exercise that directing muscle everyone pesters her about.

As always, *The ShakespeareProject* exists as the grateful commemoration of two fiercely strong souls, Samuel E. LaMaccchia (the sower of the seed) and Michael A. Wilson.



Regarding "The Shakespeare Project"

The Shakespeare Project is an Acting Ensemble made up entirely of members of Actors' Equity Association, dedicated to the exploration of the complete works of William Shakespeare and other playwrights. The group had its genesis as a Special Project of **Equity Library Theatre Chicago** and currently presents "Theatrical Readings" of the plays of Shakespeare that achieve a clarity usually only accomplished by fully producing the plays. Assembled by *The Shakespeare Project's* Artistic Director, Mara Polster, these exceptionally skilled actors have been seen on the stages of the Shakespeare Repertory, The Goodman, Steppenwolf, The Court Theater, and many other theatres in the Chicago area and around the country.

The Shakespeare Project performed its first public reading in November of 1995. In January of 1996, monthly performances began at The Chicago Cultural Center, at 78 East Washington Street (These readings are presented as a Special Project for Equity Library Theatre). In June of 1996, The Chicago Park District adopted *TSP* as a sponsored organization to present its monthly readings as a survey course with discussion to follow at The Berger Park Cultural Arts Center, 6205 North Sheridan Road. *TSP* will continue performing at both of these locations throughout 1997- completing the entire canon with *Hamlet* in December of 1998- and plans its first full production, the apocryphal *King Edward the Third*, for 1998.

This year, *The Shakespeare Project* presents its 1997 Theatrical Reading Series, entitled "A History of the English Kings (as presented by Elizabethan Dramatists)". We hope you will join us as we take you through eleven of the Elizabethan history plays in chronological order. Next month, we continue "The Lancaster Cycle" with *The Second Part of Henry the Fourth*. All readings begin at 1:00 p.m. and are free to the public. *TSP* is a nonprofit organization and may receive tax-deductible contributions. If you wish, you may send contributions to *The Shakespeare Project*, 2706 North Albany Street, Chicago, Illinois 60647. For further information or to book a reading, contact *TSP* at 773/252-8544. Fax number 773/252-5433.

Email address TSPchicago@aol.com. Or take a look at our website: <http://members.aol.com/TSPchicago/shakespeare.html>.

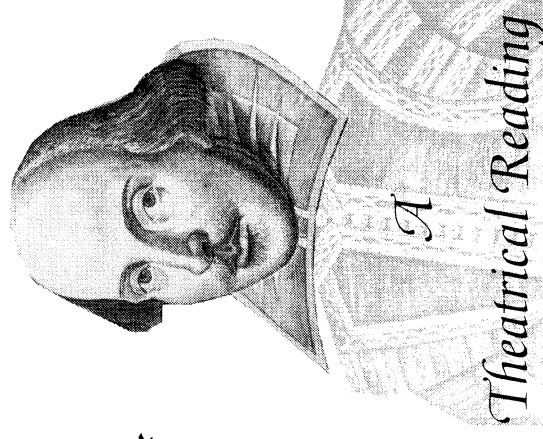
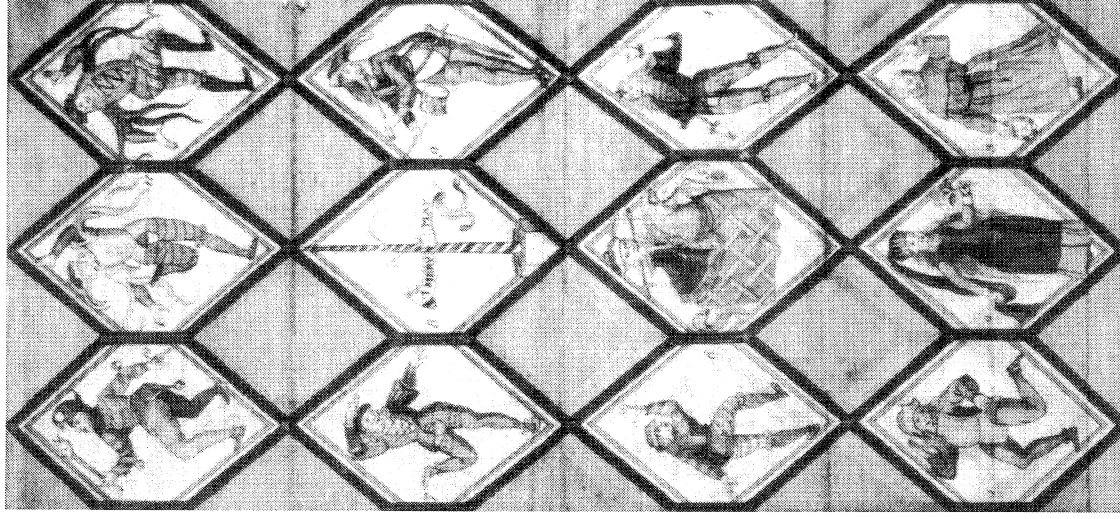
Special thanks to CHRIS WILSON, PHIL MARTINI, SUE FASTWOLF, Goldie Click, JIM WATKINS, ALEX, AND TORRY CAVANAUGH FOR TEACHING US WELSH.

The Shakespeare Project would like to say, "THANK YOU" to the following people and organizations for their generous donations:

Judy Blue	Richard Sullivan Lee
Ron & Barbara Butts	Phil Martini
Chicago Park District	Oakton Community College
Chicago Cultural Center	Arlene & Ralph Polster-Moore
Chicago Scenic Studios	Michelle Sterling
Maureen Gallagher	Richard Wharton
Mr. & Mrs. Peter Garino	Mr. & Mrs. Christopher Paul Wilson
Arlene Hirsch	James P. & Nita Lee Wilson
Gary Houston	Bess Winakor
Carolyn LaMacchia	Mr. & Mrs. Peter Wittrock

& *Our Many Anonymous Contributors!*

The Shakespeare Project
presents



Theatrical Reading

of

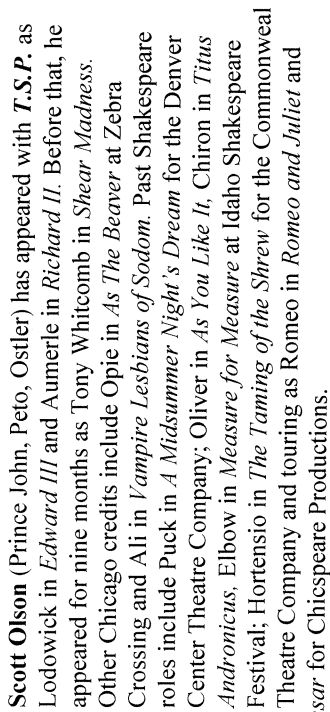
The First Part of King Henry the Fourth

Directed By:
Richard Marlatt



"The Shakespeare Project" is sponsored by



All of the actors with *The Shakespeare Project* are members of Actors' Equity Association, the Union of professional Actors and Stage Managers. All *T.S.P.* presentations at The Berger Park Cultural Arts Center are sponsored by The Chicago Park District. All performances at The Chicago Cultural Center are produced as a Special Project of Equity Library Theatre, for which the actors contribute their talents under a Special Agreement between *T.S.P.*, E.L.T. and A.E.A.



A black and white portrait of a young woman with dark, wavy hair, smiling warmly at the camera. She is wearing a dark top with a light-colored collar. The background is a soft, out-of-focus grey.



Dennis Sook (Sir Walter Blunt, Traveler, Sheriff) most recently appeared as a poker player in *The Odd Couple* at Candlelight's Forum Theatre. He's glad to be back in Chicago after working in New York for several years, where he appeared in commercials, on the soaps, and Off-Broadway in *New Mexican Rainbow Fishing* and the baseball comedy *A Perfect Diamond*. Dennis was also in the Actors' Studio production of Tennessee Williams' *Orpheus Descending*. His career began touring with the National Shakespeare Company for two seasons. Dennis earned his Master's from the City College of New York.

HENRY IV PART I and HENRY IV PART II

